

PRINCIPALI TEMPI DI ATTESA PRESTAZIONI A CUP ULSS 9 CON PRIORITA' B(10gg) - D(30gg) - P(90gg)

Per elenco completo delle prestazioni cliccare sul link:

<https://salute.regione.veneto.it/info/informazioni/tempidattesa>

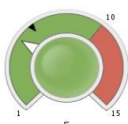
DIAGNOSTICA PER IMMAGINI

88.94.D - RM DEL GINOCCHIO

ULSS 9 Scaligera > Ex ULSS 20 Verona
C.D.C. `SAN FRANCESCO` (Privato Accreditato)

Ottobre 2022 (ultimo mese disponibile)

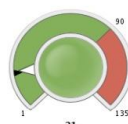
Classe B
(entro 10 gg): **5**



Classe D
(entro 30 gg): **20**

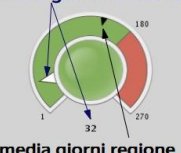


Classe P
(entro 90 gg): **21**



COME SI LEGGE

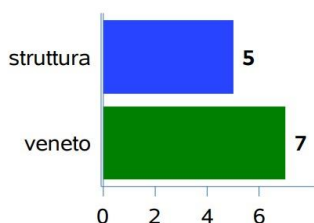
media giorni struttura



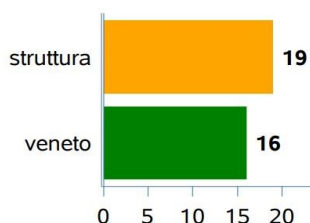
media giorni regione

da Agosto 2022 a Ottobre 2022 (3 mesi)

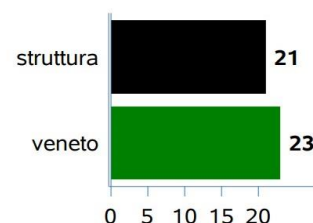
Classe B
(entro 10 gg): **5**



Classe D
(entro 30 gg): **19**



Classe P
(entro 90 gg): **21**

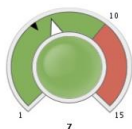


88.01.6 - TC DELL' ADDOME COMPLETO SENZA E CON MDC

ULSS 9 Scaligera > Ex ULSS 20 Verona
C.D.C. `SAN FRANCESCO` (Privato Accreditato)

Octobre 2022 (ultimo mese disponibile)

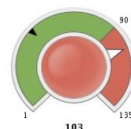
Classe B
(entro 10 gg): **7**



Classe D
(entro 30 gg): **17**

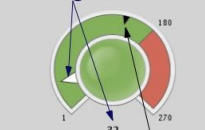


Classe P
(entro 90 gg): **103**



COME SI LEGGE

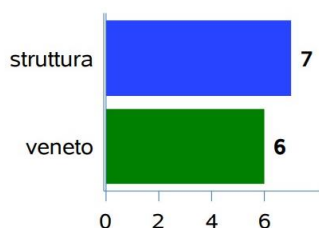
media giorni struttura



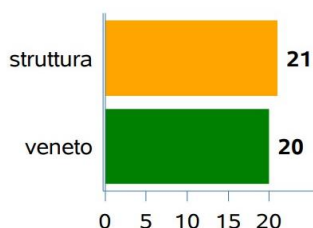
media giorni regione

da Agosto 2022 a Ottobre 2022 (3 mesi)

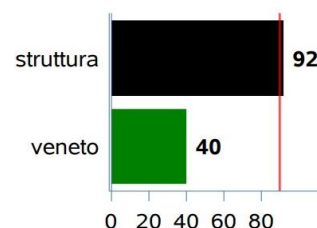
Classe B
(entro 10 gg): **7**



Classe D
(entro 30 gg): **21**



Classe P
(entro 90 gg): **92**

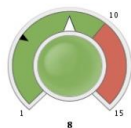


87.41 - TC DEL TORACE

ULSS 9 Scaligera > Ex ULSS 20 Verona
C.D.C. `SAN FRANCESCO` (Privato Accreditato)

Octobre 2022 (ultimo mese disponibile)

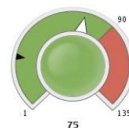
Classe B
(entro 10 gg): **8**



Classe D
(entro 30 gg): **25**

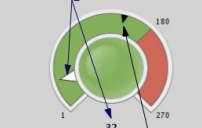


Classe P
(entro 90 gg): **75**



COME SI LEGGE

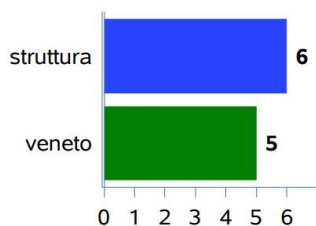
media giorni struttura



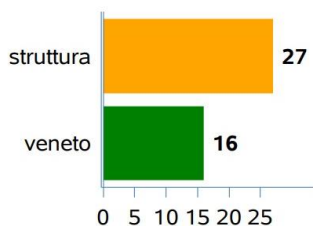
media giorni regione

da Agosto 2022 a Ottobre 2022 (3 mesi)

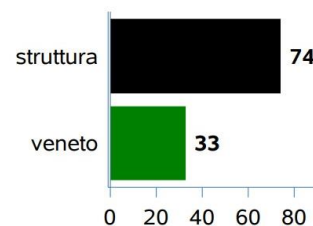
Classe B
(entro 10 gg): **6**



Classe D
(entro 30 gg): **27**



Classe P
(entro 90 gg): **74**

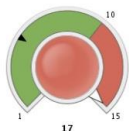


87.37.1 - MAMMOGRAFIA BILATERALE (2 proiezioni)

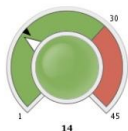
ULSS 9 Scaligera > Ex ULSS 20 Verona
C.D.C. `SAN FRANCESCO` (Privato Accreditato)

Ottobre 2022 (ultimo mese disponibile)

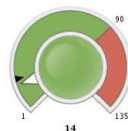
Classe B
(entro 10 gg): **17**



Classe D
(entro 30 gg): **14**

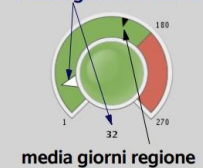


Classe P
(entro 90 gg): **14**



COME SI LEGGE

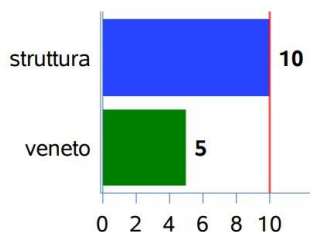
media giorni struttura



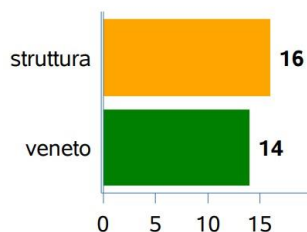
media giorni regione

da Agosto 2022 a Ottobre 2022 (3 mesi)

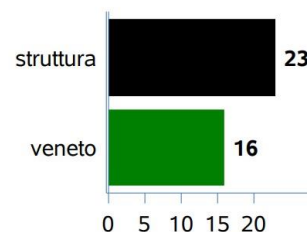
Classe B
(entro 10 gg): **10**



Classe D
(entro 30 gg): **16**



Classe P
(entro 90 gg): **23**



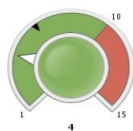
CARDIOLOGIA

89.7A.3 - PRIMA VISITA CARDIOLOGICA. Incluso: ECG (89.52)

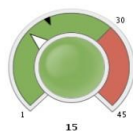
ULSS 9 Scaligera > Ex ULSS 20 Verona
C.D.C. `SAN FRANCESCO` (Privato Accreditato)

Ottobre 2022 (ultimo mese disponibile)

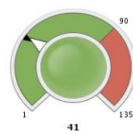
Classe B
(entro 10 gg): **4**



Classe D
(entro 30 gg): **15**

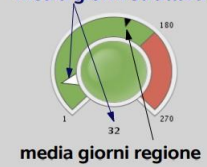


Classe P
(entro 90 gg): **41**



COME SI LEGGE

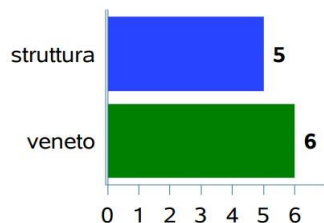
media giorni struttura



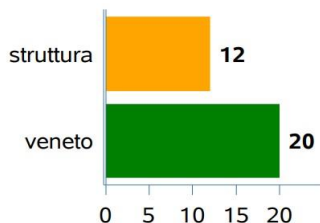
media giorni regione

da Agosto 2022 a Ottobre 2022 (3 mesi)

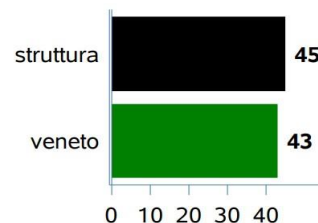
Classe B
(entro 10 gg): **5**



Classe D
(entro 30 gg): **12**



Classe P
(entro 90 gg): **45**

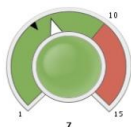


89.50 - ELETTRICARDIOGRAMMA DINAMICO (Holter)

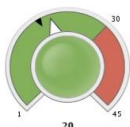
ULSS 9 Scaligera > Ex ULSS 20 Verona
C.D.C. `SAN FRANCESCO` (Privato Accreditato)

Octobre 2022 (ultimo mese disponibile)

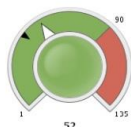
Classe B
(entro 10 gg): **7**



Classe D
(entro 30 gg): **20**

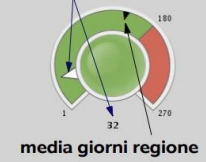


Classe P
(entro 90 gg): **52**



COME SI LEGGE

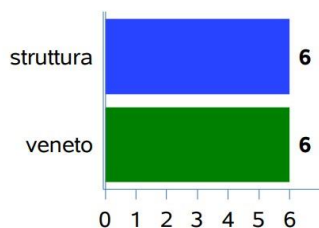
media giorni struttura



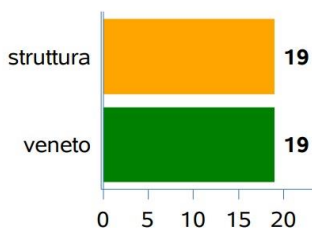
media giorni regione

da Agosto 2022 a Ottobre 2022 (3 mesi)

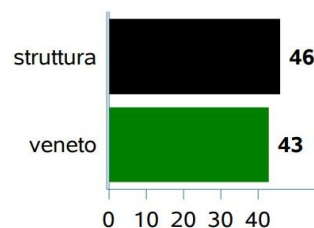
Classe B
(entro 10 gg): **6**



Classe D
(entro 30 gg): **19**



Classe P
(entro 90 gg): **46**

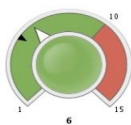


88.77.4 - ECOCOLORDOPPLER DEGLI ARTI INFERIORI ARTERIOSO O VENOSO. A riposo

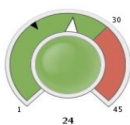
ULSS 9 Scaligera > Ex ULSS 20 Verona
CENTRO RIABILITATIVO VERONESE SRL (Privato Accreditato)

Octobre 2022 (ultimo mese disponibile)

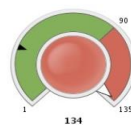
Classe B
(entro 10 gg): **6**



Classe D
(entro 30 gg): **24**

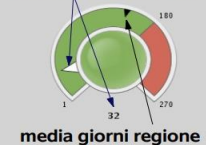


Classe P
(entro 90 gg): **134**



COME SI LEGGE

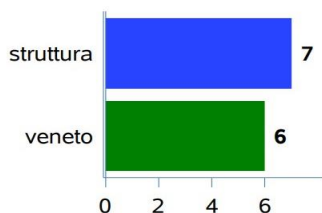
media giorni struttura



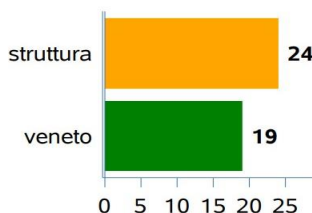
media giorni regione

da Agosto 2022 a Ottobre 2022 (3 mesi)

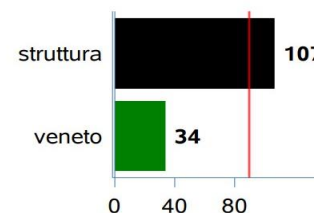
Classe B
(entro 10 gg): **7**



Classe D
(entro 30 gg): **24**



Classe P
(entro 90 gg): **107**

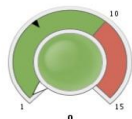


89.43 - TEST CARDIOVASCOLARE DA SFORZO CON CICLOERGOMETRO

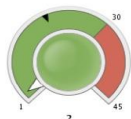
ULSS 9 Scaligera > Ex ULSS 20 Verona
C.D.C. `SAN FRANCESCO` (Privato Accreditato)

Ottobre 2022 (ultimo mese disponibile)

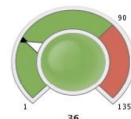
Classe B
(entro 10 gg): **0**



Classe D
(entro 30 gg): **2**

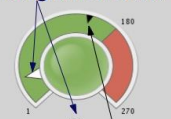


Classe P
(entro 90 gg): **36**



COME SI LEGGE

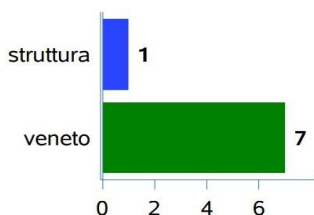
media giorni struttura



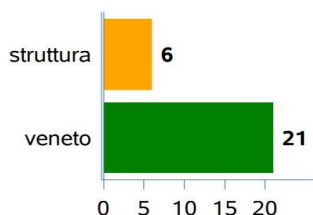
media giorni regione

da Agosto 2022 a Ottobre 2022 (3 mesi)

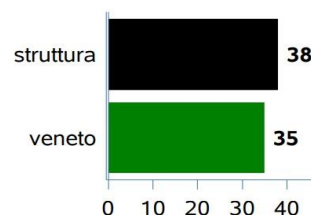
Classe B
(entro 10 gg): **1**



Classe D
(entro 30 gg): **6**



Classe P
(entro 90 gg): **38**



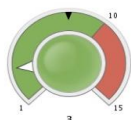
VISITA ORTOPEDICA

89.7B.7 - PRIMA VISITA ORTOPEDICA

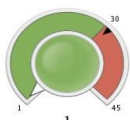
ULSS 9 Scaligera > Ex ULSS 20 Verona
C.D.C. `SAN FRANCESCO` (Privato Accreditato)

Ottobre 2022 (ultimo mese disponibile)

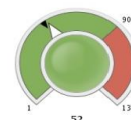
Classe B
(entro 10 gg): **3**



Classe D
(entro 30 gg): **1**

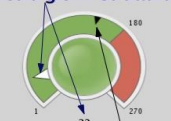


Classe P
(entro 90 gg): **52**



COME SI LEGGE

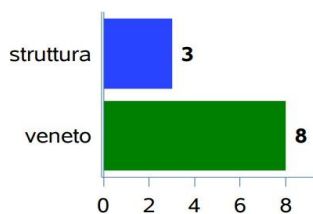
media giorni struttura



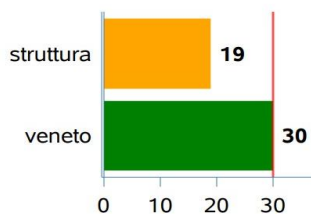
media giorni regione

da Agosto 2022 a Ottobre 2022 (3 mesi)

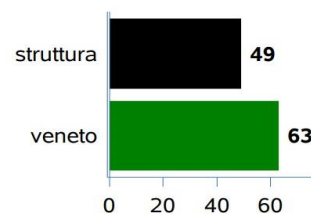
Classe B
(entro 10 gg): **3**



Classe D
(entro 30 gg): **19**



Classe P
(entro 90 gg): **49**



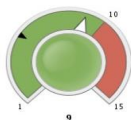
VISITA FISIATRICA

89.7B.2 - PRIMA VISITA DI MEDICINA FISICA E RIABILITAZIONE

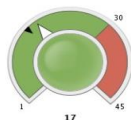
ULSS 9 Scaligera > Ex ULSS 20 Verona
C.D.C. `SAN FRANCESCO` (Privato Accreditato)

Ottobre 2022 (ultimo mese disponibile)

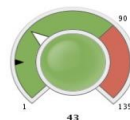
Classe B
(entro 10 gg): **9**



Classe D
(entro 30 gg): **17**

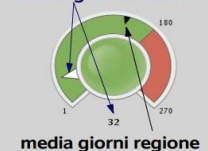


Classe P
(entro 90 gg): **43**



COME SI LEGGE

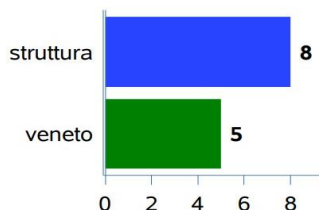
media giorni struttura



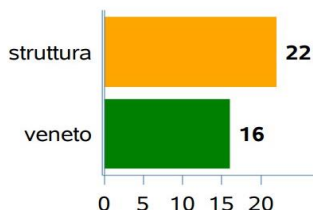
media giorni regione

da Agosto 2022 a Ottobre 2022 (3 mesi)

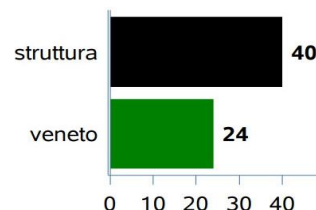
Classe B
(entro 10 gg): **8**



Classe D
(entro 30 gg): **22**



Classe P
(entro 90 gg): **40**



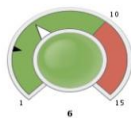
VISITA OCULISTICA

95.02 - PRIMA VISITA OCULISTICA

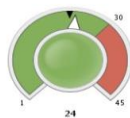
ULSS 9 Scaligera > Ex ULSS 20 Verona
C.D.C. `SAN FRANCESCO` (Privato Accreditato)

Ottobre 2022 (ultimo mese disponibile)

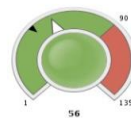
Classe B
(entro 10 gg): **6**



Classe D
(entro 30 gg): **24**

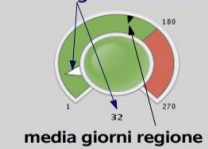


Classe P
(entro 90 gg): **56**



COME SI LEGGE

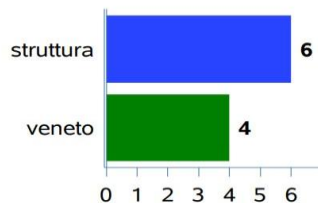
media giorni struttura



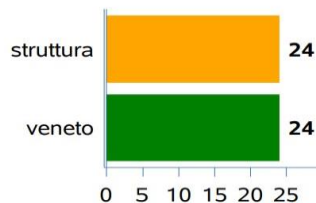
media giorni regione

da Agosto 2022 a Ottobre 2022 (3 mesi)

Classe B
(entro 10 gg): **6**



Classe D
(entro 30 gg): **24**



Classe P
(entro 90 gg): **58**

